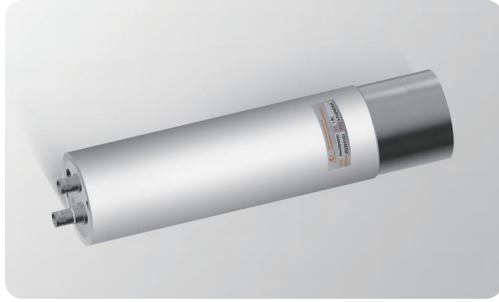


1. Overview



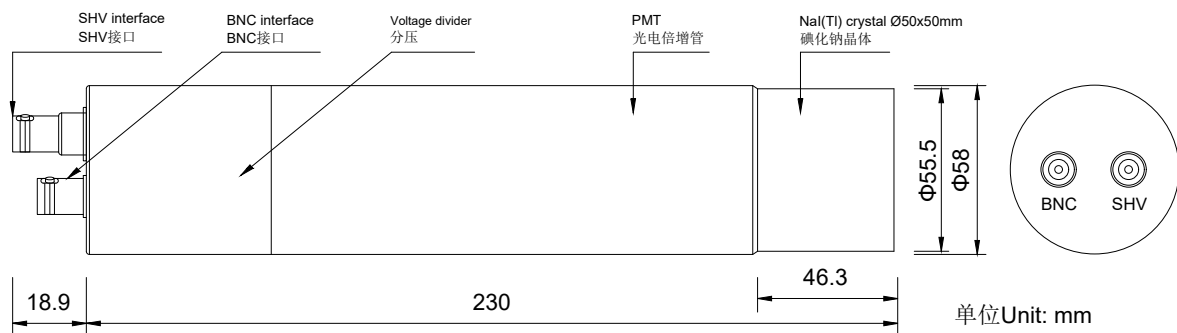
ENAI-D50H50VD01 scintillator detector is composed of a 2-inch NaI scintillator crystal, photomultiplier tube and voltage divider. Due to its high detection efficiency, good energy resolution, flexible matching, stable performance and easy to use, it is widely used in energy spectrum measurement and analysis, food testing, densitometry and other fields.

2. Main technical parameters

- ▶ Application voltage 0~+1250V
- ▶ Effective size of scintillator $\Phi 50 \times 50 \text{mm}$
- ▶ Interface type BNC、SHV
- ▶ Energy resolution $\leq 7.5\%$
- ▶ Work environment Temperature 0~+40℃
- ▶ Storage environment Temperature -20~+60℃
- ▶ Storage environment Humidity <90%RH

Note: 1) The output state of the detector is adjusted by using ^{137}Cs radioactive source test.

3. Outline Dimensional Drawing



Wiring Instructions

Interface type	SHV interface	BNC interface
Port definition	0~+1250V power supply	Signal interface